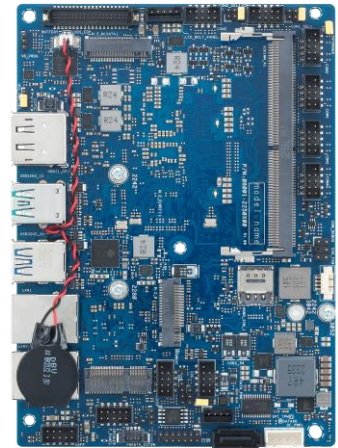


X7213RE-IM-A

3.5" SBC, Intel® Atom® X7213RE, DDR5 SO-DIMM, 5G, LTE, WiFi 5/6/6E
DP, HDMI, eDP/LVDS, Dual-LAN, Multiple COM, USB3.2, M.2, SATA 3.0, PCIE 3.0, TPM

Features

- Intel® Amston Lake SoC, Low Power Consumption at 9W TDP
- 3x Display Configuration with Multiple Interface: HDMI, DP, eDP/LVDS
- Integrated Intel® UHD Graphics, up to 4K/60 Hz
- 6 COM ports, 2x RS-232/422/485 and 4x RS-232
- M.2 E-key 2230, M-key 2242/2280, B key 3042/3052, SATA 3.0
- Wide Voltage: 9~36V; Wide Operating Temperature: -20° ~ 70°C
- Built-in AI Acceleration with Intel® Deep Learning Boost



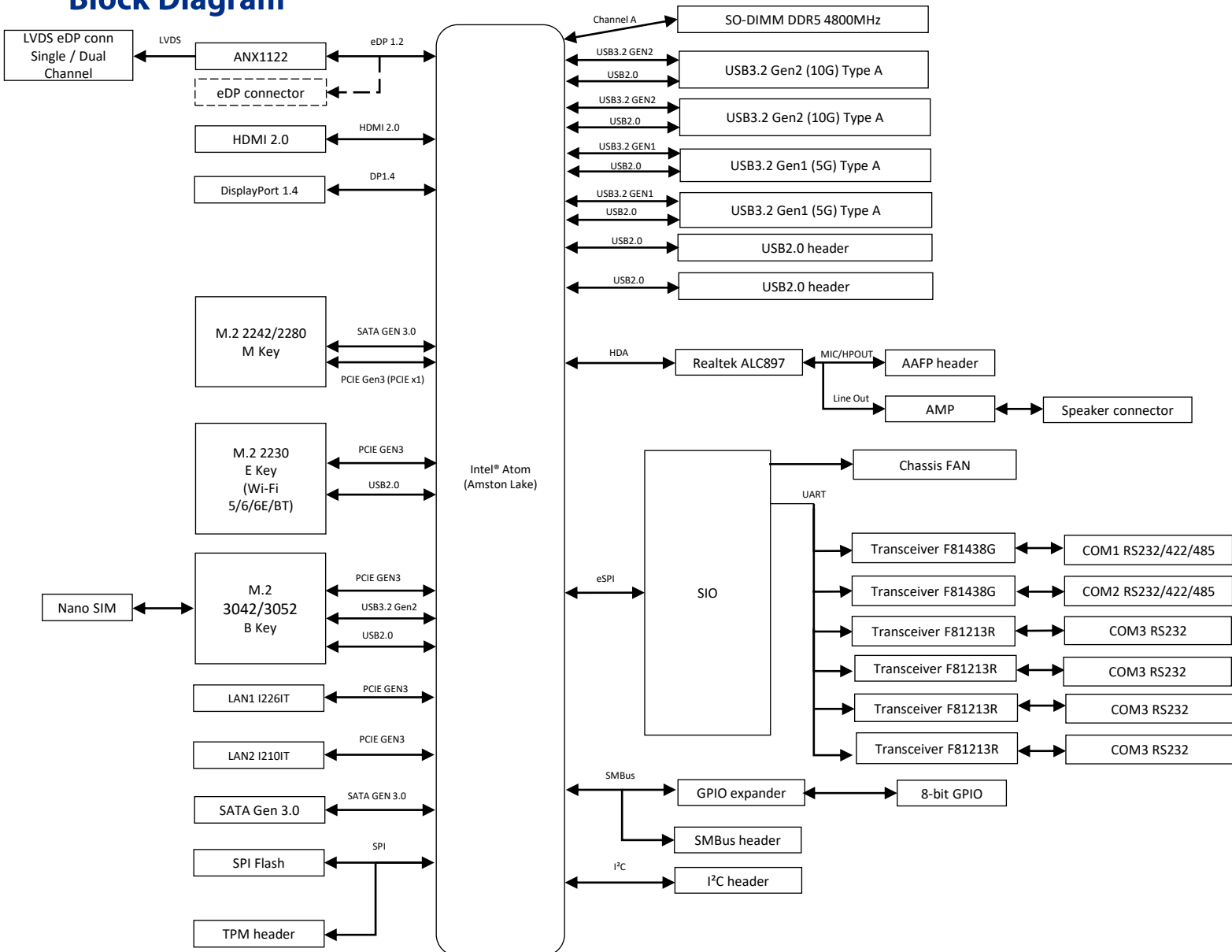
Specifications

| | | |
|---------------------------|---|---|
| Processor | CPU | Intel® Atom® X7213RE |
| | TDP | 9W |
| | # of Cores | 2 |
| | Base Frequency | 2.0 GHz |
| | Max. Turbo Frequency | 3.4 GHz |
| Memory | Technology | DDR5 4800 MHz, In-Band ECC (IB ECC) |
| | Max. | 16GB |
| | Socket | SO-DIMM |
| Display | Controller | Intel® UHD Graphics |
| | HDMI | 1, Supports HDMI 2.0 up to 4K x 2K @ 60 Hz |
| | Display Port | 1, Supports DP1.4 up to 4096 x 2304 @ 60 Hz |
| | LVDS | 1, Supports 1920 x 1080 @ 60 Hz (co-lay with eDP 1.2) |
| Multiple Display | 3 Display Configuration: HDMI+DP+LVDS/eDP | |
| Expansion Slot | M.2 | 1 x M.2 Socket 1 with E key, type 2230 for TPU/WIFI/BT device (PCIe/USB) |
| | | 1 x M.2 Socket 3 with M key, type 2242/2280 (SATA mode/PCIEx1) |
| | | 1 x M.2 Socket 2 with B key (3042/3052) for 4G/5G (PCIe/USB2.0/USB3.2 Gen2) |
| Ethernet | Speed | 10/100/1000Mbps/2.5G |
| | Controller | 1x Intel® i210IT, supports WOL/PXE 1x Intel® i226IT (2.5G), supports WOL/PXE |
| | Connector | 2 x RJ-45 |
| Audio | Codec | Realtek® ALC897 AMP 3W |
| Storage | SATA port | 1 x SATA Gen 3.0 (6Gb/s) |
| Rear I/O | HDMI | 1 |
| | Display Port | 1 |
| | USB3.2 | 2x Gen2 (10 Gb/s) & 2x Gen1(5 Gb/s) |
| | Ethernet | 2 (1G; 2.5G) |
| Internal Connector | Serial Port | 6 (2 x RS-232/422/485, 4x RS-232) |
| | USB2.0 | 2 |
| | Chassis Fan Header | 1 (PWM+DC Mode) |
| | Chassis Intrusion Header | 1 |
| | Front Panel Audio Header (AAFP) | 1 |
| | System Panel Header | 1 (10-1 Pin) |
| | Clear CMOS Jumper | 1 |
| | SATA Power Header | 1 |
| | SMBus Header | 1 |
| | I ² C Header | 1 |
| | GPIO Header | 1 (8-bit) |
| Power Connector | 1 x 4-pin Power Connector | |

Specifications

| | | |
|-------------------------|---------------------------|---|
| Watchdog Timer | H/W | YES |
| Security | TPM | 1 x SPI TPM header; Intel® PTT |
| | Platform Integrity | Intel® OS Guard; Intel® Boot Guard |
| Power | Power Type | DC power input |
| | Voltage | 9V-36V |
| Operating System | Microsoft Windows | Windows® 10 (64bit)/Windows® 10 IoT Enterprise/ Windows® 11 IoT Enterprise |
| | Linux | Ubuntu, RedHat Enterprise, Fedora Workstation |
| Environment | Operating Temperature | -20~ 70°C |
| | Non Operating Temperature | -40~ 85°C |
| | Relative Humidity | 10%~95% |
| Dimension | Form Factor | 3.5", 146 x 105 mm |
| Certification | Safety | CB, BSMI, CE-LVD |
| | EMC | CE, FCC, VCCI, BSMI, RCM |
| | Green | GA (RoHS) |

Block Diagram



Order Information

| Model name | Part number | Description |
|--------------|-------------|-----------------------------------|
| X7213RE-IM-A | 90ME09G* | X7213RE,DDR5 SO DIMM,DUAL LAN, MB |

* The part number might vary for different regulations and package. Please consult the TPM in your region for exact 90PN.

Packing List

| Part number | Description | Quantity |
|-------------|---------------|----------|
| 14013* | SATA 6G CABLE | 1 |

* The part number might vary due to part number revision.